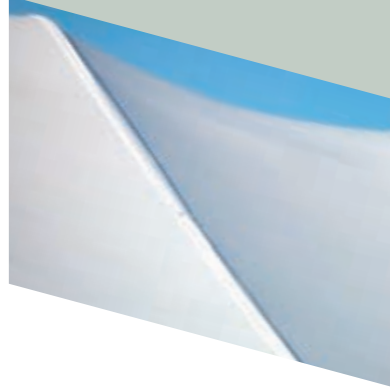


Structures

Many Tents, One Sense of Purpose



Tectrac™ SK

Simplicity of a Canopy, Strength of a Structure



The Tectrac™ Structure is a revolutionary clearspan structure that allows for installation in either a tilt up or lift up technique allowing unique versatility to suit any jobsite. As with all of our clearspan structures the fabric slides into a channel within the extruded aluminum beam allowing for a superior performing and long lasting top. The Tectrac™ SK is available in widths of 10', 20', 30', 40', and 50'. All Tectrac™ Structures are expandable to any required length by simply adding 10' or 20' modular bays to the structure.

Benefits

- Uses smaller crews for installation
- Durable design engineered for 70MPH winds
- Drop-in style purlins
- Install at ground level or tilt up like conventional clearspan
- Interchangeable hardware parts between sizes

Tectrac™ SK



Specifications

- Tectrac™ SK sizes: 10', 20', 30', 40', and 50' width, any required length
- Fabric: 15oz Laminated PVC
 - Translucent white & colors. 15oz Blackout UW
 - Fabric certified flame retardant
- Frame system: extruded aluminum
- Stakes: 1" double headed stake
- Push button design, no tools required



Tectrac™ LK

Rental proven clearspan

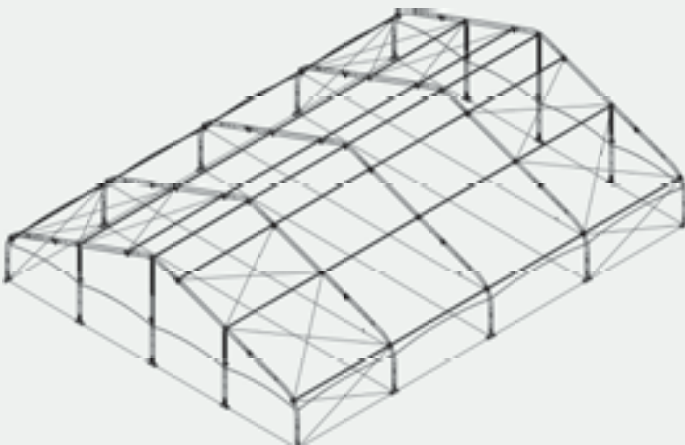


Evolved from its predecessor the Tectrac SK, the larger more robust Tectrac LK has been designed to span the larger sizes of rental structures along with added functionality and features. As with all of our clearspan structures the fabric slides into a channel within the extruded aluminum beam allowing for a superior performing and long lasting top. The Tectrac™ LK is available in 40', 50', 60', 70' and 80' widths. All Tectrac™ Structures are expandable to any required length by simply adding 10' or 20' modular bays to the structure.

Benefits

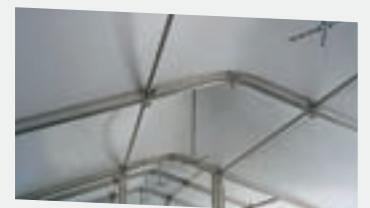
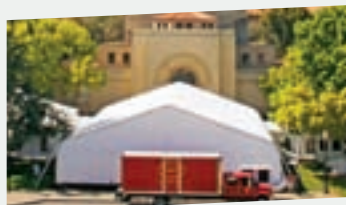
- Uses smaller crews for installation
- Durable design engineered for 70MPH winds
- Drop-in style purlins
- Kedared eave purlins allow for sliding walls
- High-peak roof panel option
- Install at ground level or tilt up like conventional clearspan
- Interchangeable hardware parts between sizes

Tectrac™ LK



Specifications

- Tectrac™ LK sizes: 40', 50', 60', and 80' width, any required length
- Fabric: 18oz Laminated PVC
 - Translucent white & colors.
 - Fabric certified flame retardant
- Frame System: extruded™ aluminum beam profile
- Stakes: 1" double headed stake
- Push button design, no tools required
- Flexibility



Minibeam™ Structures

Engineered for Success



The Minibeam™ Clearspan Fabric Structure features a design with no interior poles to allow for the best use of space. The design consists of a series of aluminum beams that are rotated into position and held into position by the use of lateral purlins. The fabric of the structure slides through a track in the extruded beam and is highly tensioned to achieve superior performance for seasonal applications. The Minibeam™ is available in widths of 20', 30', 40', and 50' and is expandable in modular bays in 10', 15' and 20' increments.

Benefits

- Simple design with very few parts
- Durable design engineered for 85MPH winds
- Bolt-in style purlins keep structure quiet during the windiest of conditions
- Tilt up beams one at a time
- Interchangeable hardware parts between sizes

Minibeam™ Structure



Specifications

- Minibeam™ sizes: 20', 30', 40', and 50' width, any required length
- Fabric: 15oz Laminated PVC
 - Translucent white & colors. 15oz Blackout UW
 - Fabric certified flame retardant
- Frame System: Minibeam™ aluminum extrusion- 4" profile
- Stakes: 1" double headed stake



Midbeam™ Structures

Flexibility at its Best

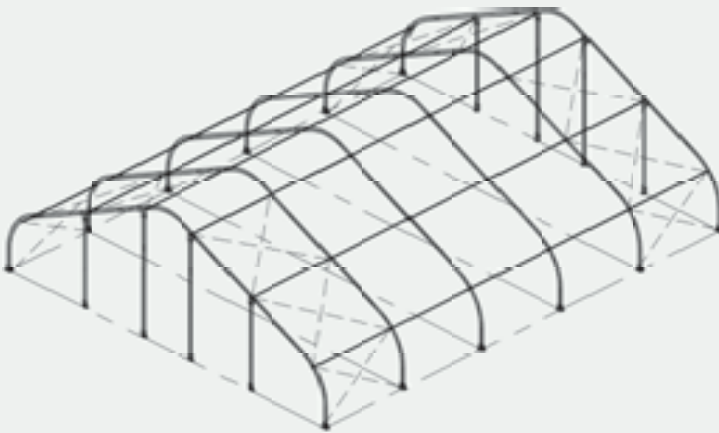


The Midbeam™ Clearspan Fabric Structure features a design with no interior poles to allow for the best use of space. The design consists of a series of aluminum beams that are rotated into position and held into position by the use of lateral purlins. The fabric of the structure slides through a track in the extruded beam and is highly tensioned to achieve superior performance for seasonal applications. The Midbeam™ design allows for its ease of transporting and high weight to strength ratio. The Midbeam™ is available in widths of 40', 50', 60', 80' and 100' and is expandable in modular bays in 10', 15' and 20' increments.

Benefits

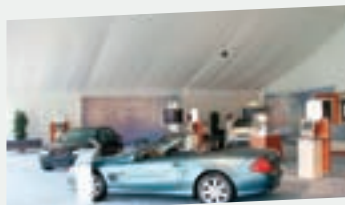
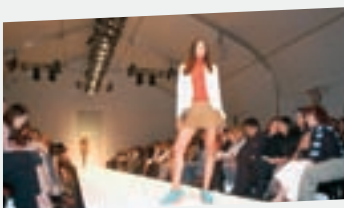
- Simple design with very few parts
- Durable design engineered for 85MPH winds
- Bolt-in style purlins keep structure quiet during the windiest of conditions
- Tilt up beams one at a time
- Round end style end configuration available
- Interchangeable hardware parts between sizes

Midbeam™ Structure



Specifications

- Midbeam™ sizes: 40', 50', 60', 80', and 100' width, any required length
- Fabric: 18oz Laminated PVC
 - Translucent white & colors. 15oz Blackout UW
 - Fabric certified flame retardant
- Frame System: Midbeam™ aluminum extrusion-9" profile
- Stakes: 1" double headed stake



Maxibeam™ Structures

Strength When You Need It



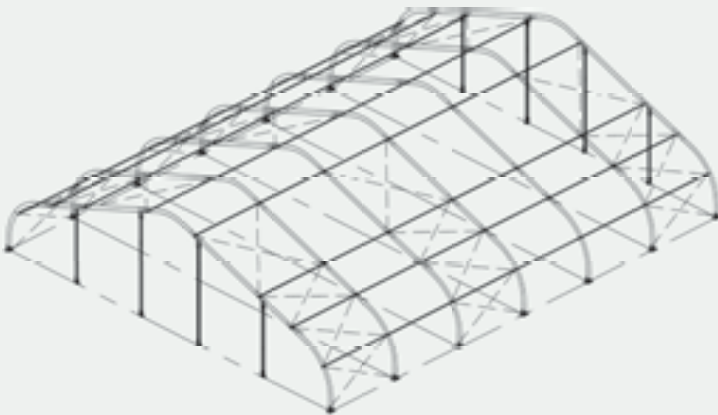
The Maxibeam™ Clearspan Fabric Structure features a design with no interior poles to allow for the best use of space. The design consists of a series of aluminum beams that are rotated into position and held into position by the use of lateral purlins. The fabric of the structure slides through a track in the extruded beam and is highly tensioned to achieve superior performance for seasonal applications. The Maxibeam™ design allows for extreme loading needed for permanent and long term applications. The Maxibeam™ is available in widths of 60', 80', 100', and 120' and is expandable in modular bays in 10', 15' and 20' increments.



Benefits

- Simple design with very few parts
- Durable design engineered for 90MPH winds
- Snow loading possible
- Bolt-in style purlins keep structure quiet during the windiest of conditions
- Tilt up beams one at a time
- Interchangeable hardware parts between sizes

Maxibeam™ Structure



Specifications

- Maxibeam™ sizes: 60', 80', 100', and 120' width, any required length
- Fabric: 18oz Laminated PVC
 - Translucent white & colors. 18oz Blackout UW
 - Fabric certified flame retardant
- Frame System: Maxibeam™ aluminum extrusion-12" profile
- Stakes: 1" double headed stake





If YOU can IMAGINE it... WE can BUILD it



For over 40 years, Aztec Tents has been established as a leading manufacturer of tents, clearspan structures, and other customized fabric membrane shelters. Whether your needs are for state of the art customized clearspan fabric structures or simply tents for special events, Aztec Tents can provide you with the service, experience, and expertise to help you with your decision.

www.aztectents.com

Aztec Tents
2665 Columbia Street
Torrance, CA 90503
Toll Free (800) 228-3687
Fax (310) 381-0722